



Heating and hot water

for Yachts and Motor Boats



Truma liquid gas heating systems lengthen the season on the water. The comfort-conscious skipper knows the value of having pleasant temperatures below deck. The Truma boat heating systems heat, ventilate and dry out your boat cleanly, quietly and economically. The integrated fan is fitted with a flexible duct system for selective heat distribution. The Truma Boiler for boats supplies the galley and shower with hot water – comfort and safety round the clock, in harbour or at sea.



Trumatic E liquid gas heaters

Economical

Every Trumatic E works with the minimum current consumption, so it is extremely kind to your batteries. Thanks to the high level of efficiency, energy is used optimally. The built in thermostat keeps the temperature regulated according to the wishes of the skipper and his crew. All that you need to do is select the required room temperature and operating level on the control panel.

Space-saving

With housings in tough plastic and optimum heat insulation, the Trumatic E offers trouble-free installation.

Easy to use

The control panel with its integrated thermostat is located in the cabin. This means the system can be operated with ease from inside.



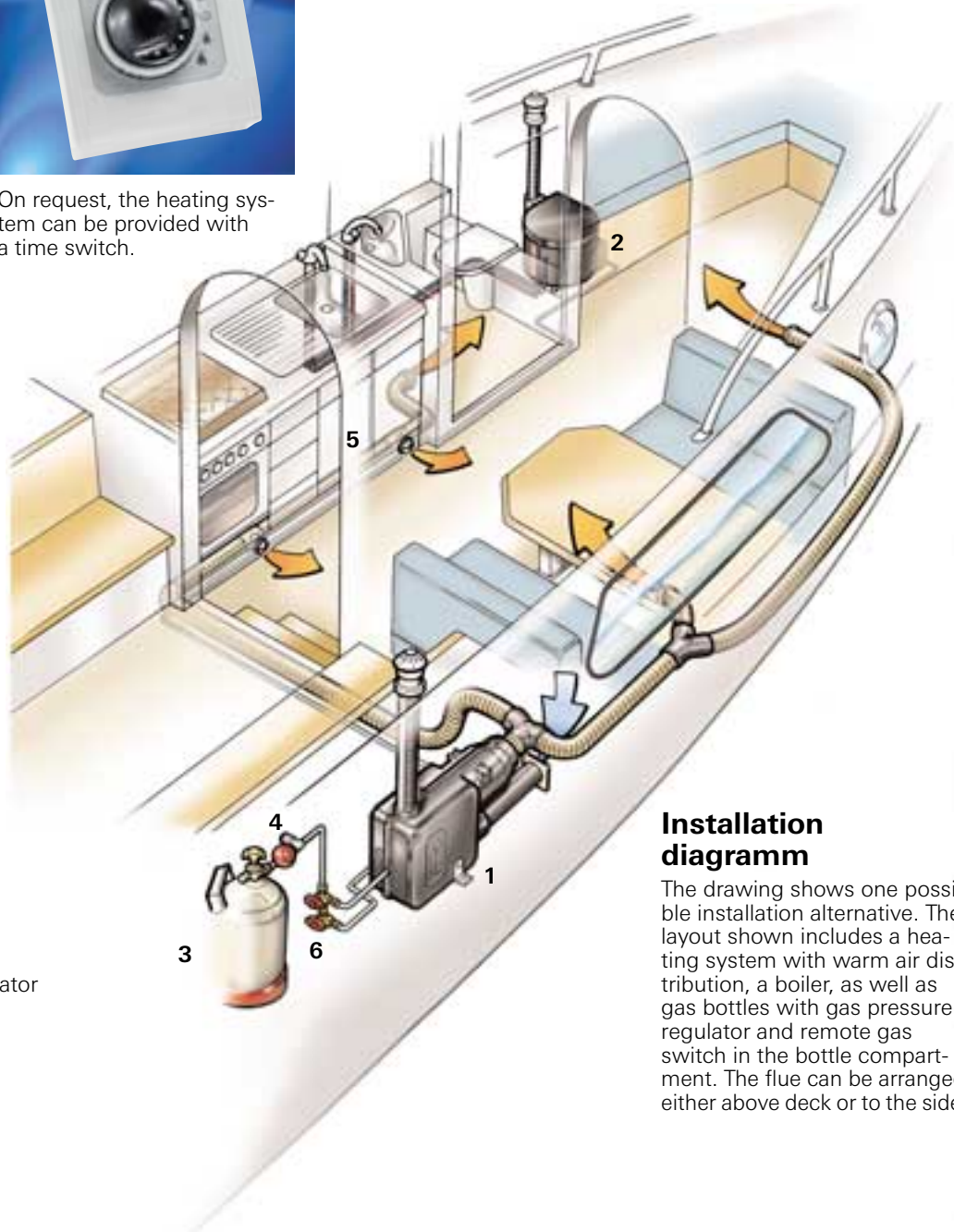
On request, the heating system can be provided with a time switch.

Reliable and quiet

Another pleasing feature is the system's super-quiet operation. The powerful fan can hardly be heard when it is operating. This guarantees the whole crew a peaceful night's sleep.

The reliable operation of the Trumatic E is a matter of course. Liquid gas burns with

practically no residues, so there are no maintenance costs and the associated periods when the boat has to be taken out of operation.



Installation diagram

The drawing shows one possible installation alternative. The layout shown includes a heating system with warm air distribution, a boiler, as well as gas bottles with gas pressure regulator and remote gas switch in the bottle compartment. The flue can be arranged either above deck or to the side.



- 1 Heater Trumatic E 2400
- 2 Truma-Boiler
- 3 Gas bottle
- 4 Gas remote switch on the regulator
- 5 Warm air ducts
- 6 Manifold valve

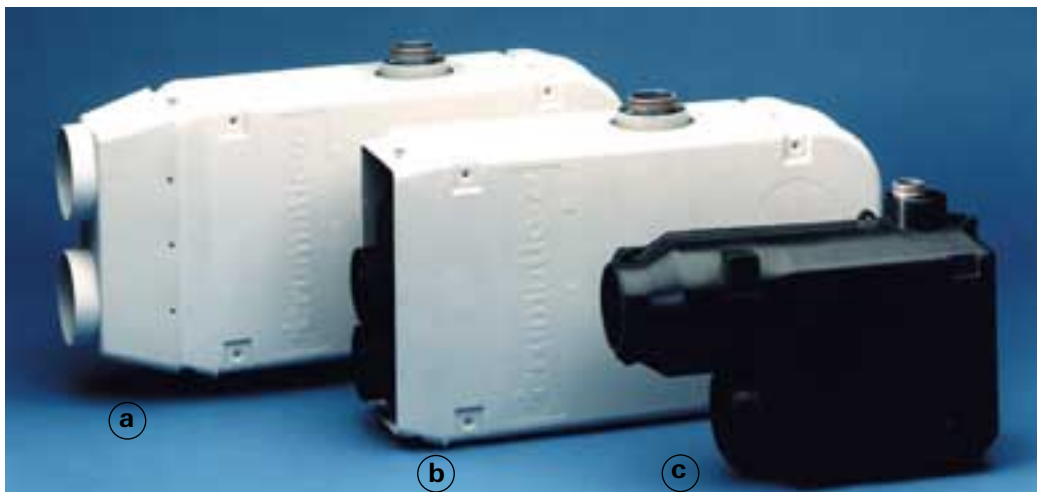
.. for every type of boat

Different models

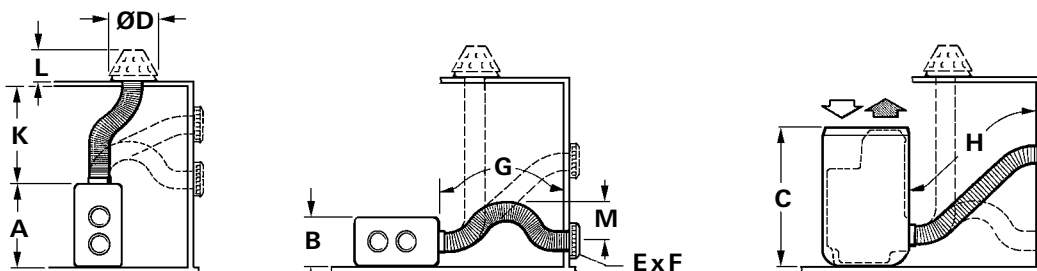
The Trumatic E is available in two different versions: E 2400 and E 4000. Each model can be supplied for connection to either a 12 V or 24 V supply. It is fitted in the cabin or outside with the appropriate installation fittings.

Illustration right:

- Ⓐ Trumatic E 4000 A for external installation
- Ⓑ Trumatic E 4000 for internal installation
- Ⓒ Trumatic E 2400 for internal or external installation



Alternativ models and dimensions



Trumatic (dimensions in mm)	A	B	C	Ø D/L	E x F	G max.	H max.	K max.	M max.
E 2400 with wall flue	248	123	370	-	Ø 102	1500	1500	-	150
E 2400 with deck flue	248	123	370	166/87	-	-	-	2000	-
E 4000 with wall flue	300	162	530	-	115 x 120	600	1000	-	150
E 4000 A with wall flue	300	162	600	-	115 x 120	600	1000	-	150
E 4000 with deck flue	300	162	530	166/87	-	-	-	2000	-
E 4000 A with deck flue	300	162	600	166/87	-	-	-	2000	-

Technische Daten

Trumatic	E 2400		E 4000/E 4000 A	
	Gas type	Liquid gas (propane/butane)		
Operating pressure	Either 30 oder 50 mbar			
Rated thermal output	2400 W *	1200 W **	3700 W *	1850 W **
Gas consumption	200 g/h *	100 g/h **	310 g/h *	150 g/h **
Curennt consumption (12 V version)	1,1 A *	0,6 A **	2,3 A *	1,0 A **
Curennt consumption (24 V version)	0,7 A *	0,4 A **	1,06 A *	0,6 A **
Rest Curennt 12 V (24 V)	< 0,01 A			
Air flow rate (12 V)	74 m ³ /h *	43 m ³ /h **	104 m ³ /h *	67 m ³ /h **
Air flow rate (24 V)	78 m ³ /h *	49 m ³ /h **	102 m ³ /h *	70 m ³ /h **
Complete weight	c. 4,7 kg		c. 10 kg	

* Full load ** Partial load

Trumatic C

the comfort centre

The Trumatic C is the right piece of equipment for providing independence and luxury. This compact appliance provides both warmth and hot water, fully automatically with electronic control and monitoring.

evenly distributed all around in the cabin or in the forward area of the boat.

The Trumatic C can be operated with a timer.

Optimal warm air distribution

A comprehensive parts program offers an individually designed warm air distribution in every type of boat and makes sure that you have warmth where you need it –



Trumatic C 3402 and C 6002

- compact, concealed installation
- combined combustion air and exhaust gas routing (optionally to the side or above deck)
- two power ratings: 3400 W or 6000 W
- fan-assisted gas burner for reliable operation, also while the vehicle is moving or under severe wind conditions
- low energy consumption as a result of high efficiency
- thermostat controlled shut-off and re-igniting
- automatic switching to the required burner stage
- low current input (12 V): 0,2-2,4 A (C 3402) 0,2-5,6 A (C 6002)
- Gas consumption: 170-285 g/h (C 3402), 170-490 g/h (C 6002)
- simple operation thanks to electronically controlled operating process
- electronic monitoring of all functions
- heating operation also possible without water
- large water tank (12 litres) in stainless high-grade steel n° 1.4571 (V4A)
- possibility to heat with or without hot water in winter operation
- water temperature adjustable to 40°C or 60°C in summer operation
- integrated fan with 4 warm air outlets
- individually designed warm air distribution through comprehensive parts program
- optionally available with timer
- special version with electric heater element for the boiler (230 V, 450 W)



Boat boiler

enjoy a shower on board



The Truma boiler for boats, specially developed for maritime applications, provides a constant, reliable flow of hot water, even at sea and independent of a mains power supply or other machinery.

Clean

Operated with the clean energy form, liquid gas, the unit is maintenance-free as well as being economical to run. This makes the Truma boiler for boats a particularly attractive proposition.

High quality water tank

The tank is made of stainless steel WNr. 1.4571 (V4A) which makes it especially stable and not prone to corrosion. It is also suitable for food use. It is safe up to high pressures, so that all immersion and pressure pumps can be used.

Space-saving

The compact design (the 10 litre version is only 26 cm high) and combined exhaust and combustion air intake pipe makes it possible to install the unit in the most restricted of spaces.

Short heating up time

Thanks to the highly efficient gas burner with fan support, heating up times are very short (see table).

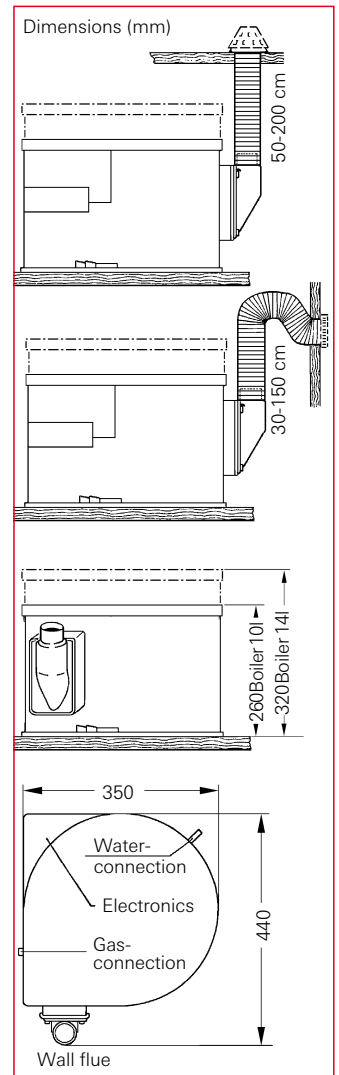
The control unit is used for switching on and off, as well as for pre-setting the temperature (30°C to 70°C). This is

mounted in the cabin, in an easily accessible spot.

Economic

The boiler operates without a pilot light and is very sparing in its energy consumption. If the water temperature drops, the automatic electronic ignition relights the system.

Alternative installations



Technical data

Water tank capacity	10 or 14 litres
Water pressure	up to 2,8 bar max.
Output	Gas burner: 1500 watts
Gas type	Liquid gas (propane/butane)
Operating pressure	either 30 or 50 mbar
Gas consumption	120 g/h
Heating up time	Cold water temperature 15°C heated up to 70°C: for 10 l: approx. 35 minutes for 14 l: approx. 50 minutes
Voltage	12 V DC
Current consumption	Heating up: 0,28 A Standby: 0,04 A
Weight	10 l boiler: approx. 6,7 kg (empty) 14 l boiler: approx. 7,3 kg (empty)
Water connections	Pressure-tight hot water hose up to 3.5 bar (Truma SBH special hose) or rigid pipes (Ø 10 mm)
Special version	Electrical heating 230 V, 450 W

Quality and safety

All individual parts are carefully scrutinised for quality. In this way only perfect materials are used for Truma heating systems and boilers. Modules are tested for operation and safety at virtually every step in the manufacturing process. Each finished piece of equipment is subjected to extensive testing with the help of highly sensitive electronic measuring and testing equipment. All safety functions are tested again and measured values stored electronically.



Closed combustion circuit

All systems are provided with a closed combustion circuit. The combustion air is sucked in from outdoors and exhaust gases are fed outdoors (see cross-sectional diagram). The flexible combustion air and exhaust gas pipe either

passes through a deck flue or to the side using a wall flue.

Failsafe electronics

Failsafe electronic control takes care of reliable functioning and monitors safe operation. If any faults arise,

the gas supply on the device is cut off immediately.

Approval at home and abroad

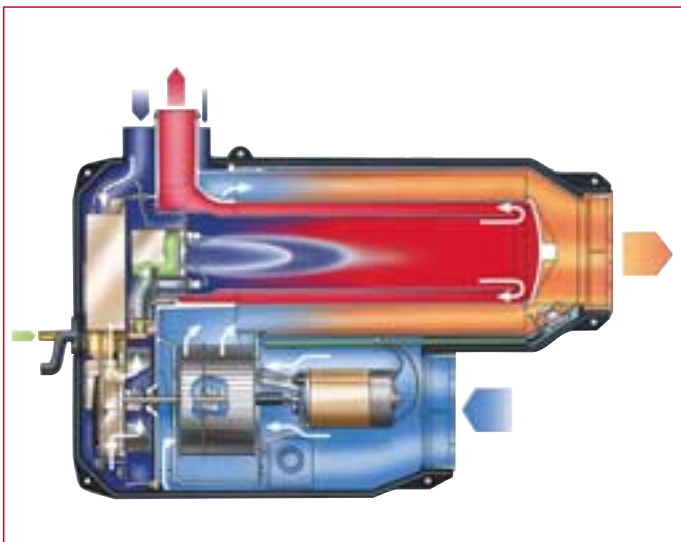
Trumatic E, Trumatic C gas heating systems as well as the boat heating systems have been tested in Germany by the DVGW authority and are approved for installation in boats. These products also have a Recommendation from the Inland Waterways Trade Association, as well as CE identification numbers.

Remote gas switch

If no gas appliances are in use, you can switch off the gas flow in the bottle compartment from the comfort of the cabin, simply by pressing a button. An LED shows if the supply is turned on. The remote gas switch works from the 12 V supply and uses a minimal amount of current (40 mA when the supply valve is open and none when closed).

Quick-acting valve

Truma quick-acting valves make it possible to cut off gas pipes. When several appliances are connected, we recommend the use of manifold valves, which save on screw-connectors and T-pieces, as well as reducing connecting times. For clear allocation of connections, the heads of all the valves in the set are marked with different symbols. Any connections not used are sealed off with end caps.





...the brand name you
can trust



R. Van Laere
Paardenmarkt 21
B-2000 ANTWERPEN
TEL: +32.3.233.14.86.
TEL: +32.3.231.41.90.
MAIL: r.van.laere.@skynet.be